



RESIDENTIAL GUIDE & RESOURCE LIST

www.townofstrasbourg.ca

Updated November 2024



Welcome to the Town of Strasbourg

A scenic drive through the Last Mountain Valley, north of Regina on Highway 20, will take you to Strasbourg – a town that brings to life the balance that we all seek. A progressive, thriving town, Strasbourg strives to keep its heritage and spirit of more than 115 years alive, by staying true to its small town roots and its vital sense of community.

Travelers from all over can expect friendly faces and an accommodating atmosphere when visiting Strasbourg. Take advantage of the newly revitalized Lions Park along Highway 20, complete with a large splash park, picnic shelter, asphalt walking trails, three-season washroom, memorial garden, pickleball court, community gardens, seniors exercise equipment, and tot playground. While visiting, make sure to stop by the Strasbourg & District Museum at the end of Mountain Street. A renovated train station as old as the Town itself, the Museum boasts an impressive display of historical artifacts from Strasbourg and the surrounding area. Be sure to check out the Old Schoolhouse and Homestead House, also located on the Museum grounds. Strasbourg also has a small green space for the community to enjoy on Mountain Street, with a beautifully constructed gazebo. It has become a wonderful, central meeting place for the Strasbourg residents to gather or rest.

There is never a dull moment in Strasbourg, as events are continually hosted year-round. Dinner theatres, dance festivals and recitals, fowl suppers, community fundraisers, and tradeshow are just the tip of the iceberg of events that you can attend in Strasbourg. If you like sports, hockey and curling keep the Strasbourg Recreation Centre busy during the winter months. In the summer, the Strasbourg Sports Grounds hosts both junior and senior ball teams for the season, as well as plays host to many provincial rodeo events. Across the road from the Sports Grounds is the beautifully-kept, nine-hole, sand green golf course, which hosts several events, including an annual Hole-in-One tournament.



A short, 20-minute drive west from Strasbourg will take you to beautiful Rowans Ravine Provincial Park on Last Mountain Lake, where you can enjoy fishing, boating, swimming, and camping. To the north of Strasbourg is the oldest bird sanctuary in North America. Last Mountain Lake is a migratory artery, drawing outdoorsmen from all over the world.

Strasbourg enjoys its quieter, country pace, but also has the comforts of a larger centre. There is no need to leave town to enjoy great restaurants, specialty shops, high-speed internet, or banking, including 24-hour ATM service. A hardware store, lumber yard, post office, library, liquor store, service station, grocery stores, SARCAN, an insurance and bookkeeping agency, hair salons, auto body shop, vehicle repair shops, and numerous contractors are only some of the many services available.

Residents and visitors in need of health care can expect to be well taken care of in Strasbourg. The Town is home to a well-staffed medical clinic, with the services of a doctor, a nurse practitioner, dentist, and mental health practitioners. Health care continues into the community with massage therapists, and a pharmacy open five days a week. To further ensure the safety of our area, RCMP, ambulance, and a well-trained volunteer fire department are based within the town, and are always on call.

Five churches provide for the spiritual needs of the residents: Alliance, Calvary Fellowship, Catholic, Lutheran, and United. You are welcome to join in worship and experience the inspirational musical talents from various musical groups.

Families either visiting or residing in Strasbourg, will find a community that supports growth and welcomes new faces. The Town has reasonably priced fully-serviced lots in a new subdivision, as well as strong tax incentive policies, for anyone wanting to build their new home. The K-12 school draws students from a wide area, boasts a new playground facility, and provides many extracurricular activities, both sports- and arts-oriented. Strasbourg is also an excellent place for businesses and families to grow, offering choices to the working family, including a fully-licensed daycare. A number of senior citizen housing rental units are available, as well as senior condos, complete with lawn care and snow removal. A mobility bus, a volunteer taxi service, and Meals on Wheels are always available to residents needing assistance.

Visit our website at www.townofstrasbourg.ca to see all that Strasbourg has to offer, or like our Facebook page at www.facebook.com/townofstrasbourg. Feel free to contact the Town Office at (306) 725-3707 or strasbourg@sasktel.net for more information on the community.

~~~~~

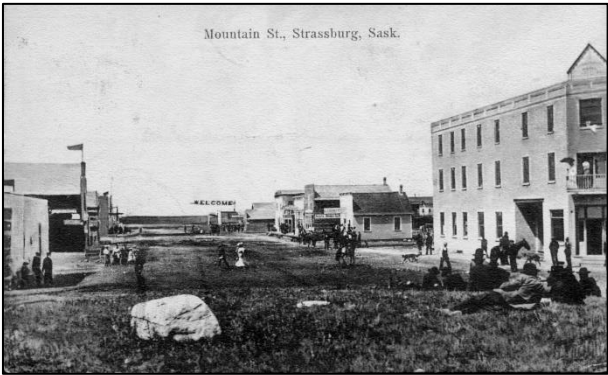
### A Little History...

Nestled at the base of the Last Mountain Hills, the earliest settlers came to Strasbourg in 1884. Strasbourg became known for its rich agricultural soil and ample land for pastures, which brought many people to the area.

Strasbourg has a rich cultural and historical background, originating with the German pioneers who settled the area. The town's name was originally spelled **Strassburg** – **Strass** meaning 'street' or 'road', and **Burg** meaning 'fortress' or 'castle.' The spelling was changed to the French 'Strasbourg' in 1919.

### SOME FACTS ABOUT STRASBOURG

|                                 |            |
|---------------------------------|------------|
| <b>Population (2021 Census)</b> | <b>788</b> |
| First Settlers Came             | 1884       |
| Railway Came                    | 1905       |
| Incorporated as a Town          | 1907       |
| McKillop Municipality Formed    | 1910       |
| Electricity                     | 1928       |
| Sewer                           | 1958       |
| Water                           | 1962       |
| Dial Phones                     | 1963       |
| Natural Gas                     | 1965       |
| Telecable                       | 1986       |
| Paved Streets                   | 1988       |
| Fibre Optic Internet            | 2023       |



# Town Office

## Town Office Contact Information

---

The Town Office is **open Monday to Friday from 8:30 a.m. to 4:00 p.m.** (open over lunch) and is closed on all statutory holidays and when otherwise posted.

**Phone:** (306) 725-3707

**Email:** strasbourg@sasktel.net

**Fax:** (306) 725-3613

**Civic Address:** #1-200 Mountain Street

**Mailing Address:** Box 369, Strasbourg, SK S0G 4V0

Want to check out more? Visit our website at [www.townofstrasbourg.ca](http://www.townofstrasbourg.ca) or our Facebook page at [www.facebook.com/townofstrasbourg](http://www.facebook.com/townofstrasbourg).

## Your Town Staff

---

The Town of Strasbourg employs three (3) full-time Administration and three (3) Public Works employees, as well as seasonal and student employees.

Chief Administrative Officer – Jennifer Gritzfeld

Assistant Administrator – Crystal Mytopher

Office Services Clerk – Tracy Edwards

Public Works Foreman – Tyler Hilderman

Assistant Public Works Foreman – Keith Hilderman

Public Works Operator – Robert Gwillim

## Your Town Council

---

The Town of Strasbourg Mayor is the highest ranking government official for the municipality, but the Town also elects six (6) Councillors, and together with the Mayor, they make up Town Council. The Council meets every three weeks on Wednesdays at 7:00 p.m. in the Council Chambers (#1-200 Mountain Street) where they discuss and decide upon the direction for the municipality (e.g. set budget, discuss infrastructure needs, etc.). Mayor and Councillor terms are for four (4) years and are elected either through a general election or by-election.

|              |                   |                |                                 |
|--------------|-------------------|----------------|---------------------------------|
| Mayor:       | Kelvin Schapansky | (306) 725-7774 | strasbourgmayor@gmail.com       |
| Councillors: | Peter Barry       | (306) 725-3190 | strasbourgcouncillor2@gmail.com |
|              | Sherry Burgess    | (639) 914-7006 | strasbourgcouncillor3@gmail.com |
|              | Vicki Cornwell    | (306) 725-7603 | strasbourgcouncillor5@gmail.com |
|              | Lorne Gottselig   | (306) 725-7006 | strasbourgcouncillor1@gmail.com |
|              | Rick Schulz       | (306) 725-1401 | strasbourgcouncillor6@gmail.com |
|              | Rodger Yauck      | (306) 725-7455 | strasbourgcouncillor4@gmail.com |

# What Residents Should Know

## How Do Property Taxes Work?

---

Town Council sets the mill rate, base tax, and mill rate factors during its annual budget deliberations. Every residential property pays a set base tax and the remainder of their taxes are made up by 80% of the taxable assessment of the property multiplied by the mill rate. The last portion of the taxes are the education property taxes, in which the Government of Saskatchewan sets the mill rate.

Tax notices are sent to property owners at the beginning of June, and taxes are due by December 31<sup>st</sup> every year. A 6% discount on the municipal portion of taxes is available to residents who pay their taxes by June 30. A declining discount structure is available for the remainder of the year. Taxes can be paid by cash, cheque, debit card, credit card (VISA and MasterCard), online banking, and e-transfer. When paying online, please use the tax roll number located on your tax notice.

## Where Do My Taxes Go?

---

It is the Town Council and Administration's mandate to provide good quality of life to the residents of Strasbourg. People often ask what this means, and further question "what do we get for our tax money?" It is good for residents to understand that not a day goes by without receiving value for your tax dollars. Here are a few examples:

Every day you:

- Have access to paved roads that have had repairs
- Are protected from fire with well-maintained equipment and well-trained volunteers
- Can enjoy our parks and green spaces, including the newly upgraded Lions Park on Edwards Street
- Have the RCMP protect your property
- Have bylaws enforced
- Have snow cleared when required
- Enjoy the cut grass and weed control
- Have access to the Town's transfer station on various occasions
- Can visit the Strasbourg & District Museum and the Strasbourg Library
- Can utilize the Town Hall and access family programs and attend community events
- Take advantage of curbside garbage and recycling pick-up
- Can utilize the streets to walk on and have streetlights light your path
- Have access to a cemetery, baseball diamonds, splash park, playground, campground, and arena

## Garbage Pick-up and Recycling

---

Loraas Disposal from Regina provides garbage and recycling services to the Town. **Pick-ups are on Wednesdays and each week alternates either garbage or recycling.** Pickup schedules and a comprehensive list of recyclable materials are located on the Town's website or in the Administration Office.

**Place your garbage or recycling cart on the street by 7:00 a.m. Wednesday morning.** After your garbage or recycling has been collected, remove the carts off the street and back to your property. A recycling cheat sheet has been included on the next page for your reference.

# RECYCLING CHEAT SHEET

|                                                                                                                                                                                                                                                                                                                                                                                                                                                                                                                                                                                                                                                                                      |                                                                                                                                                                                                                                                                                                                                                                                                                                                                                                                                                           |
|--------------------------------------------------------------------------------------------------------------------------------------------------------------------------------------------------------------------------------------------------------------------------------------------------------------------------------------------------------------------------------------------------------------------------------------------------------------------------------------------------------------------------------------------------------------------------------------------------------------------------------------------------------------------------------------|-----------------------------------------------------------------------------------------------------------------------------------------------------------------------------------------------------------------------------------------------------------------------------------------------------------------------------------------------------------------------------------------------------------------------------------------------------------------------------------------------------------------------------------------------------------|
| <p><b>Single Stream (Blue Bin)</b></p> <ul style="list-style-type: none"> <li>• Non-soiled cardboard, office paper, newsprint, junk mail, magazines, and catalogues</li> <li>• Shredding (only recyclable item to be bagged; cannot be confetti shredding, only strips)</li> <li>• Plastics numbered <u>1 through 7</u> (<u>no food containers labelled #1, no plastic wrap or plastic bags</u>)</li> <li>• <u>Tin</u> and aluminum cans</li> <li>• Household glass (food and beverage containers)</li> </ul>  <p><i>Other than shredding, all recyclable items should be loose in the bin</i></p> | <p><b>SARCAN</b></p> <ul style="list-style-type: none"> <li>• Beverage containers (aluminum cans, plastic bottles, glass bottles, juice cartons, refillable beer bottles)</li> <li>• Milk products (milk, buttermilk, cream, fluid coffee cream, lactose-free milk products, drinkable yogurt)</li> <li>• Household paint</li> <li>• Electronics (computers, printers, TVs, audio equipment, video equipment, cameras, telephones)</li> </ul> <p>(306) 725-3602<br/> <a href="http://www.sarcan.ca">www.sarcan.ca</a><br/>         122A Valley Street</p> |
| <p><b>Items Not Accepted (Blue Bin)</b></p> <ul style="list-style-type: none"> <li>• Styrofoam, metal, glass panes, ceramic dishes, hazardous chemical containers, lightbulbs, auto parts, plastic toys, household garbage, branches, wood, clothing, furniture</li> </ul>                                                                                                                                                                                                                                                                                                                                                                                                           | <p><b>Metal &amp; Appliances</b></p> <ul style="list-style-type: none"> <li>• Call either:<br/>             Mike Brunet (306) 725-4467 or<br/>             Peter Boughner (306) 725-3299</li> <li>• Scrap metal dealers will pick up</li> </ul>                                                                                                                                                                                                                                                                                                           |
| <p><b>Lightbulbs &amp; Light Fixtures</b></p> <ul style="list-style-type: none"> <li>• Recyclable at K-Light Recycling,<br/>             1665 St. John Street, Regina<br/>             (306) 359-3059</li> </ul>                                                                                                                                                                                                                                                                                                                                                                                                                                                                     | <p><b>Batteries &amp; Cell Phones</b></p> <ul style="list-style-type: none"> <li>• Recyclable at the Town Office</li> <li>• Wet cell batteries not accepted<br/>             (306) 725-3707</li> </ul>                                                                                                                                                                                                                                                                                                                                                    |

# What Residents Should Know

## Town Transfer Station Information

---

The Town of Strasbourg owns a transfer station one (1) mile east (on the 731 Grid) and one (1) mile north of the golf course. This transfer station is open for the month of May and the month of October on weekends for branches, leaves, and other clean fill wood. Year-to-year, the Town may decide to bring in large Loraas bins and offer a free landfill weekend in the spring for residents' household garbage. **This is decided annually by Council and should not always be expected.** Watch annually for advertising.

## Last Mountain Regional Landfill Information

---

The Last Mountain Regional Landfill (LMRL) is located one (1) mile west of Highway #322 and Highway #220 intersection on the north side of Highway #220.

For rates and to confirm hours of operation, please contact the LMRL at (306) 725-7010 or [lm landfill@sasktel.net](mailto:lm landfill@sasktel.net). The Town of Strasbourg is not a member of the LMRL, and as such, a \$20.00 non-member fee will apply to all loads.

### Summer Hours (May 1 – October 31)

- Wednesday & Saturday (8:00 a.m. – 4:00 p.m.)
- Sunday (10:00 a.m. – 3:00 p.m.)
- Long Weekend Mondays (10:00 a.m. – 3:00 p.m.)

### Winter Hours (November 1 – April 30)

- Wednesday (10:00 a.m. – 3:00 p.m.)
- Saturday (10:00 a.m. – 3:00 p.m.)

## Water and Sewer Information

---

Water and sewer bills are issued four times a year: January, April, July, and October. In 2025, the quarterly water rate is \$114.00 for the first 10,000 gallons, with \$10.00 per 1,000 gallons over 10,000. The quarterly sewer rate is \$42.00, and the quarterly infrastructure rate is \$45.00. All infrastructure money is put aside in a reserve account for future infrastructure upgrades. Prior to each bill going out, a green water meter card is mailed to the occupant, and the occupant is expected to read their water meter and submit the number back to the Town Office. Over the course of the next few years, a remote read system will be implemented so that water meters are read in real time, and there will be no need for manual reads.

Payments for utility bills can be made by cash, cheque, debit card, credit card (VISA or MasterCard), online at your financial institution, or e-transfer. When paying online, please use the account number located in the top left hand corner of the bill.

Please be aware, that you, as a homeowner, are responsible for all costs associated with the cleaning and clearing of your residential sewer line, as the Town is not responsible for anything that may go down your sewer and plug the line. It is your responsibility to find a plumber and pay for your sewer cleaning.



# Bylaws You Should Be Aware Of

*Please note that the Town of Strasbourg has hired Bylaw Enforcement Officer Rocky Coleman to enforce the Town's bylaws. Bylaws found on Town website [www.townofstrasbourg.ca](http://www.townofstrasbourg.ca).*

## **Animal Control Bylaw (#364/16)**

---

All dogs within the Town of Strasbourg are required to be licensed. Each dog is \$25.00 for a lifetime license. Applications are available in the Town Office and on the website. Licensing is an important aspect of animal control, as a licensed animal who is caught running at large will be returned to the owner free of charge. Owners of unlicensed animals will be fined \$150.00 if caught running at large. Cats do not need to be licensed, but they are required to be kept indoors and are prohibited from running at large. The same running at large fine applies to cats.

A maximum of three (3) cats and two (2) dogs are allowed per residence in Town. As well, dogs are not to bark, howl, bite, or create any other type of nuisance to the community, as fines apply.

The Town of Strasbourg also allows up to five (5) Urban Hens in backyards. For more information on this, please visit the Town's website, or contact the Town Office.

## **Property Standards Bylaw (#422/21)**

---

The Town of Strasbourg requires you to maintain your property to a reasonable standard, as laid out in the Property Standards Bylaw. Unkempt yards, including storage of junked vehicles, will be given warnings to clean up the yard. If not adhered to, an Order to Remedy will be given and compliance must happen within 14 days. If compliance is not taken, then the Town will perform the clean-up and any costs incurred by this work will be billed to the property owner for payment. Non-payment will result in the bill being added to the taxes at the end of the year.

## **Open-Air Fires Bylaw (#372/17)**

---

No person shall set an open-air fire within the Town without first having obtained a fire-pit permit from the Town Office. Permits are a one-time fee of \$25.00 and applications are available in the Town Office or on the website. All requirements for the fire-pit are laid out in the bylaw.

## **Noise Bylaw (#403/20)**

---

The Town of Strasbourg's noise bylaw states that loud noises are prohibited between 10:00 p.m. and 7:00 a.m. and that excessive noise is prohibited at all times. This bylaw is enforced by the RCMP.

## **Fire Department Bylaw (#431/22)**

---

The Town of Strasbourg shall charge \$7,000.00 for every fire call-out (plus \$2,000 per additional hour over three hours), regardless of the nature of the call, made to the Strasbourg & District Fire & Rescue Department. The property owner of where the incident is located, will be held responsible for said charges. **It is important that your insurance policy reflect volunteer fire fighting coverage**, as it is optional on some policies. The policy charge is minimal and will save you a lot of headache in the future.



# Bylaws You Should Be Aware Of

## Building Bylaw (#426/22)

---

A building permit is required when:

- Changing the structure of an existing building (renovation or addition);
- Building a new home or garage (detached and attached);
- Building a deck;
- Building a shed or sunroom.

Building permit applications are available from the Town Office or on the website. Please double check with the Town Office to ensure you have the proper forms and drawings in place. Once submitted to the Office, they will be approved by Town Council and sent for plan review with the Town's building inspectors Professional Building Inspections Inc. (PBI). Construction cannot begin until approval is received. This process takes between two (2) to three (3) weeks, so please give time for application approval. Once approval from Town Council has been given and the plan review completed, the permit can be paid for and picked up from the Office. Permit prices vary per project.

Permits to demolish or move a building are also needed and are available at the Town Office. A project fee, along with a demolition or moving deposit, are required. Approval from Town Council is also required.

## Traffic Bylaw (#419/21)

---

Parts of the Town of Strasbourg's Traffic Bylaw are enforced by the Bylaw Enforcement Officer, while other parts are enforced by the RCMP. Points to note:

- No one shall park a vehicle on a street or boulevard for any period of time exceeding seventy-two (72) hours.
- No one shall leave a trailer (5<sup>th</sup> wheel, utility, semi) unattached from a vehicle and parked on a street.
- ATV's, Snowmobiles, Dirt Bikes, and Golf Carts are not allowed to be driven around Town, except to take the shortest route out of Town. Golf carts have special requirements as per SGI.
- You cannot cross over the double solid line on Mountain Street. The RCMP can issue fines for this offence.
- The speed limit is posted at 40 km/h throughout the community, except on Highway No. 20 where it is 60 km/h, and on Edwards Street beside the Lions Park where it is posted at 30 km/h.

## Snow Removal Bylaw (#411/20)

---

The Town requires their residents to remove the snow from their property in a timely fashion. As well, the Town prohibits pushing snow and ice from a resident's lot onto the street, a fire hydrant or a storm drain. Improper snow clearing can result in fines from the Town.

# Resource List

## Emergency & Medical Services

---

|                                                                 |                |
|-----------------------------------------------------------------|----------------|
| Emergency Services (Ambulance/RCMP/Fire Dept)                   | 911            |
| Ambulance Office                                                | (306) 725-4114 |
| Strasbourg & District Fire & Rescue                             | (306) 725-7679 |
| RCMP – Strasbourg Depot                                         | (306) 725-3520 |
| RCMP – Southey Depot                                            | (306) 726-5230 |
| Victim Services (RCMP Southey Depot)                            | (306) 726-5230 |
| Strasbourg Emergency Measures Organization                      | (306) 725-3707 |
| Living Sky Regional Emergency Measures Organization             | (306) 539-2748 |
| <br>                                                            |                |
| Last Mountain Pioneer Home (Senior Care Home)                   | (306) 725-5500 |
| Home Care Services                                              | (306) 725-5505 |
| <br>                                                            |                |
| Strasbourg & District Health Centre                             | (306) 725-3220 |
| Monday to Friday 9:00 a.m. – 12:00 p.m. & 1:00 p.m. – 5:00 p.m. |                |
| Family Physician - Dr. Nicole Heintz                            |                |
| Nurse Practitioner - Jennelle Hubick, RN, NP                    |                |
| Strasbourg Dental Centre                                        | (306) 725-4868 |
| Tuesday to Friday 8:00 a.m. – 5:00 p.m.                         |                |
| Dentist – Dr. Cheryl Vertefeuille, D.M.D                        |                |
| Mental Health Intake (no referral necessary)                    | (306) 365-3400 |
| Public Health Clinic – Watrous (comes to Strasbourg)            | (877) 817-9336 |
| Dietician and Diabetes Education (no referral necessary)        | (855) 250-7070 |
| Strasbourg Pharmacy                                             | (306) 725-3224 |

## Provincial Emergency Resources

---

|                                                                 |                |
|-----------------------------------------------------------------|----------------|
| Professional Health Line                                        | 811            |
| Child Abuse/Protection (Monday to Friday 8:00 a.m. – 5:00 p.m.) | (306) 787-3760 |
| Kids Help Line                                                  | (800) 668-6868 |
| Mobile Crisis Line (emergencies after 5:00 p.m. on weekdays)    | (306) 757-0127 |
| Saskatchewan Assistance Plan (income assistance)                | (306) 221-5200 |

*For more social services resources, check out 211 Saskatchewan at [www.sk.211.ca](http://www.sk.211.ca)*

## Other Services

---

|                                                                     |                                                |
|---------------------------------------------------------------------|------------------------------------------------|
| Al-Anon                                                             | (306) 725-3278                                 |
| Parkland Regional Library – Strasbourg Branch                       | (306) 725-3239                                 |
| Monday & Wednesday                                                  | Closed                                         |
| Tuesday                                                             | 10:30 a.m. – 2:30 p.m. & 3:00 p.m. – 6:00 p.m. |
| Thursday & Friday                                                   | 10:30 a.m. – 4:30 p.m.                         |
| SARCAN Depot                                                        | (306) 725-3602                                 |
| Strasbourg Post Office                                              | (306) 725-3733                                 |
| Volunteer Taxi Service – see <i>Strasbourg Spotlight Newsletter</i> |                                                |

# Resource List

## Childcare & Education

---

|                                              |                |
|----------------------------------------------|----------------|
| Strasbourg Nursery School                    | (306) 551-1022 |
| Strasbourg Tiny Tots & Helping Hands Daycare | (306) 725-3321 |
| William Derby School                         | (306) 725-3441 |

## Senior Housing

---

|                                                     |                |
|-----------------------------------------------------|----------------|
| Centennial Manor – Tammy Hilderman, Manager         | (306) 536-6114 |
| Strasbourg Housing Authority – Velise Wolf, Manager | (306) 501-6193 |

## Recreation

---

|                                                 |                                  |
|-------------------------------------------------|----------------------------------|
| Angela's Dance Academy                          | (306) 725-3710                   |
| Forever in Motion                               | (306) 725-7603 or (306) 725-8101 |
| Rowans Ravine Provincial Park                   | (306) 725-5200                   |
| Strasbourg Age Friendly Recreation Board        | (639) 914-7088                   |
| Strasbourg Curling Club                         | (306) 725-3300                   |
| Strasbourg Expos Senior Baseball                | (306) 725-3771                   |
| Strasbourg Golf Club                            | (306) 725-7999                   |
| Strasbourg Lions Park                           | (306) 725-3707                   |
| Strasbourg Maroons Senior Hockey                | (306) 725-7370                   |
| Strasbourg Minor Hockey                         | (306) 725-3300                   |
| Strasbourg Senior Drop Inn Centre               | (639) 914-7006                   |
| Strasbourg Sports Park (Sports Grounds)         | (306) 725-8028                   |
| Strasbourg & Community Recreation Centre (Rink) | (306) 725-3300                   |

## Cultural

---

|                                                |                        |
|------------------------------------------------|------------------------|
| Crescent Road Cemetery                         | (306) 725-3707         |
| Last Mountain Artists Collective               | (306) 216-1393         |
| Last Mountain District Music Festival          | (306) 725-3737         |
| Last Mountain Rodeo                            | (306) 725-8028         |
| Last Mountain Theatre Company                  | (306) 725-7603         |
| Strasbourg & District Museum                   | (306) 725-3707         |
| May Long Weekend – End of June (Weekends Only) |                        |
| Saturday                                       | 10:00 a.m. – 4:00 p.m. |
| Sunday                                         | 1:00 p.m. – 5:00 p.m.  |
| July to September Long Weekend                 |                        |
| Monday                                         | Closed                 |
| Tuesday – Saturday                             | 10:00 a.m. – 4:00 p.m. |
| Sunday                                         | 1:00 p.m. – 5:00 p.m.  |
| Strasbourg Library Board                       | (306) 725-3239         |
| Strasbourg Memorial Hall                       | (306) 725-3707         |
| Strasbourg Wildlife Hall                       | (306) 580-1257         |



# Resource List

## Service & Community Organizations

---

|                                             |                |
|---------------------------------------------|----------------|
| Between Friends Quilt Guild                 | (306) 725-3003 |
| Eastshore Wildlife Federation               | (306) 580-1257 |
| Last Mountain Pioneer Home Auxiliary        | (306) 725-3182 |
| Last Mountain Pioneer Home Foundation Board | (306) 725-3360 |
| Longlaketon 4H Club                         | (306) 533-2535 |
| Silton Legion                               | (306) 725-4809 |
| Senior Citizen's Club                       | (639) 914-7006 |
| Strasbourg Sparks, Brownies, Girl Guides    | (306) 484-4544 |
| Strasbourg & District Health Centre Board   | (306) 725-7774 |

## Churches

---

|                                |                |
|--------------------------------|----------------|
| Calvary Fellowship Strasbourg  | (306) 580-1257 |
| St. John Lutheran Church       | (306) 725-3113 |
| St. Rita Roman Catholic Church | (306) 725-3474 |
| Strasbourg Alliance Church     | (306) 725-3173 |
| Strasbourg United Church       | (306) 725-3385 |

# Town Contact Information

**Town Office – (306) 725-3707**

**[strasbourg@sasktel.net](mailto:strasbourg@sasktel.net)**

Monday - Friday 8:30 a.m. to 4:00 p.m. (open over lunch)

## Information on Events

---

Want to know what's happening in Town?

- Pick up a Strasbourg Spotlight newsletter (located at the Town Office, Affinity Credit Union, RBC, Strasbourg Pharmacy, and Strasbourg Hardware & Variety).
- Check out the Town's website and Facebook page!

## Information on Businesses – LMVBA – [www.lmvba.ca](http://www.lmvba.ca)

---

Local business contact information is available on the Last Mountain Valley Business Association (LMVBA) Directory ([www.lmvba.ca](http://www.lmvba.ca)) as well as the Town of Strasbourg website.